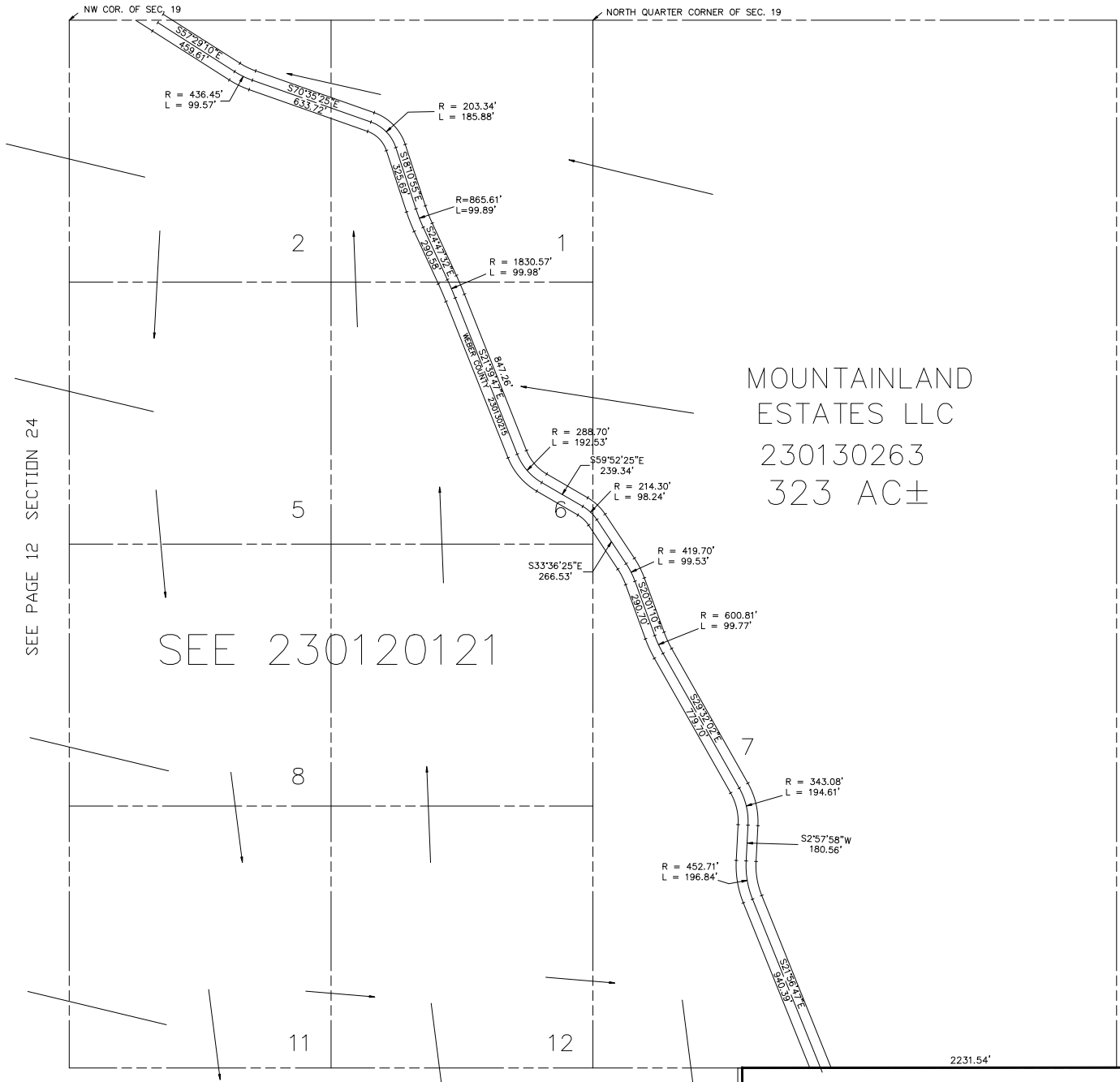


SECTION 19, T.7N., R.3E., S.L.B. & M.

IN WEBER COUNTY
SCALE 1" = 400'

TAXING UNIT: 520

SEE PAGE 13-6



MOUNTAINLAND
ESTATES LLC
230130263
323 AC±

SEE 230120121

SEE PAGE 12 SECTION 24

SEE PAGE 13

SEE PAGE 18

EVERGREEN PARK SUBDIVISION
SEE PAGES 22-39